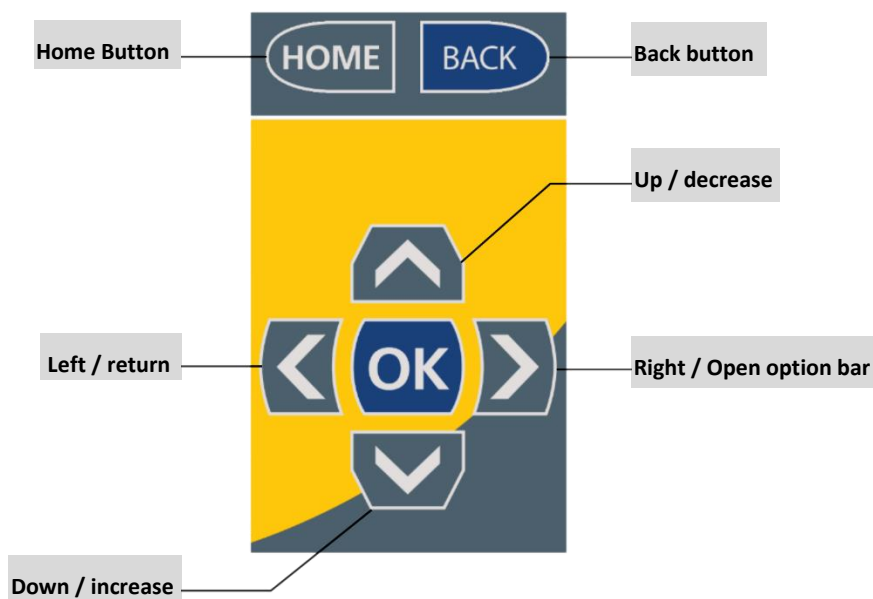




CALIBRATOR PRO



- **Dashboard mode**
Realtime overview of motor and controller measurements .
- **Setup**
Any settings through the easy setup.
- **Search engine**
Search and find every setting by typing in keyword.
- **Micro-Sd slot**
Save settings of device by using the internal SD card slot, supported file formats .DCF, .UCS
- **USB-C**
Connected to any PC , (Windows, or Linux) to update the firmware of the Calibrator to gain more feature's.





Setup

- Holds menu items to read and adjust settings in the gen4/5 controller.
- Some settings / functions are hidden behind a license, these license can be obtained per product type.
- OP-state is used to put device in **operational** or **pre-operational** , if authorized a key-cycle can also be triggered by this menu.

Dashboard

- Shows some real-time values like speed, current etc.

Tools

- **Input/Outputs**, Functions like an overview of all I/O.

File

- **Open file**, (.dcf or .ucs) (required product license).
- **Save file** (only .ucs supported)
- **License** , manage licenses
- **Calibrator info**, show information about this calibrator

Device

- **Fault reports**, shows fault log or active faults.
- **Device info**, shows some information about the connected device.
- **Connect to node**, select supported node-id to connect to.
- **Baudrate**, select baudrate or use Auto-detect (default)

With basic license



Setup

With product license



Setup



Right click to open option bar

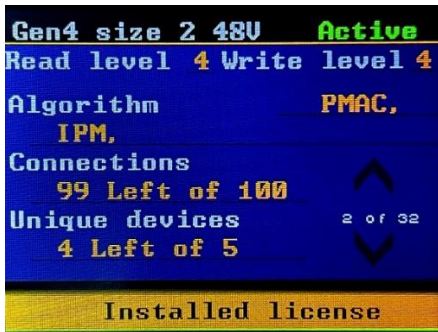


Right click to open option bar



Change settings here.

- Use Up/Down for selecting sub-index
- Selecting x on keyboard, for hex formatting.
- Use . on keyboard to make a float
- Hex show actual value stored.
- Scale show the scale that has been used.
- Min/Max, could show the minimum or maximum allowed value.

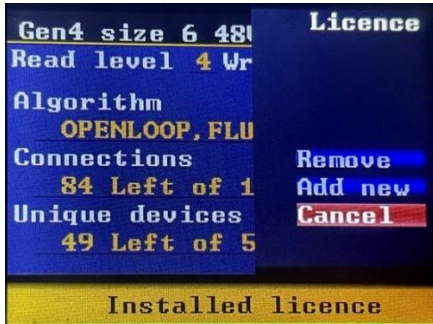


Go to : File > License

Press up or down to scroll between active licenses.

License can be expired based on

- Number of connections (key cycles)
- Unique devices is based on serial number gen4/5



To add License

- Click right arrow to open **Option bar**
- Select **Add new** than press OK

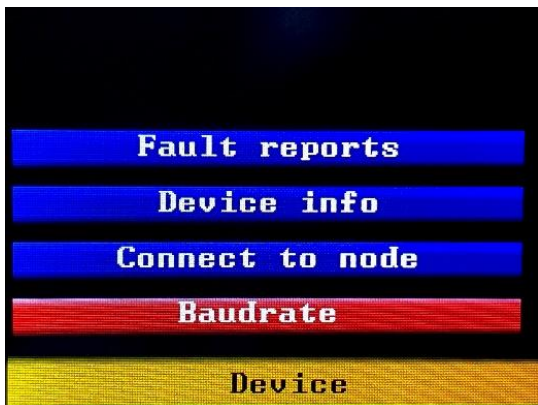
To remove License

- Click right arrow to open **Option bar**



Use request code for obtaining a valid license.

- Click **add** to install license



Go to : Device

Fault reports : shows all faults logged by the Sevcon.

Device info: shows some identification information of the Sevcon.

Connect to node: select Sevcon node (CanOpen node id).

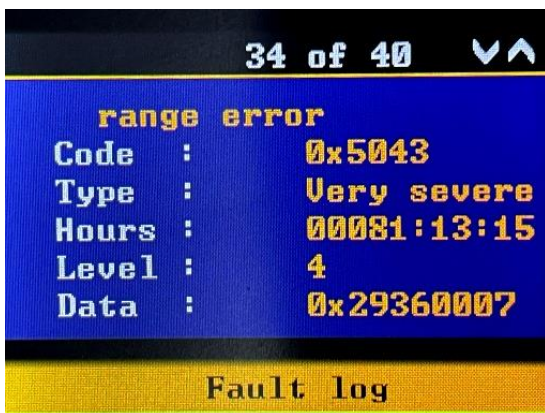
Baudrate: adjust the CAN-bus baudrate to a fixed value or use Autodetect (default).



Go to : Device > Fault reports

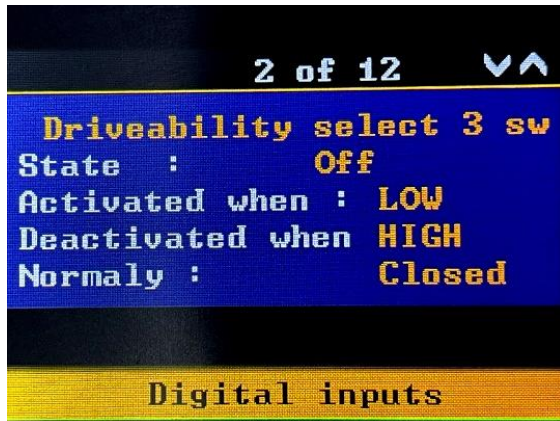
Right click to open option bar.

Up or down to scroll between logged faults.



Go to : Device > Fault reports > Fault log

Logged faults

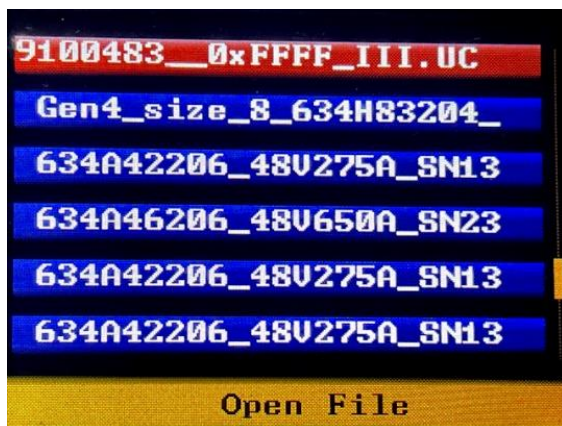
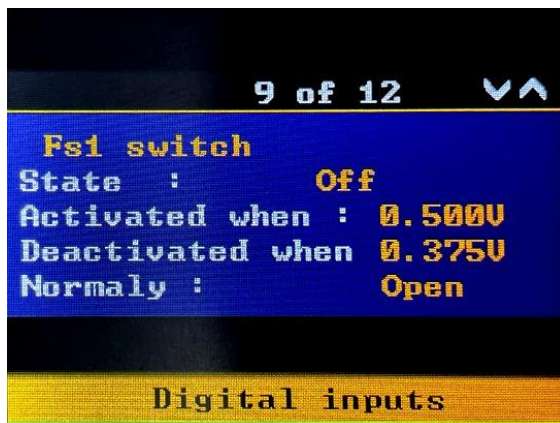


Go to : Tools > Input/outputs

Right click to open option bar.

Select digital inputs, analog inputs, or outputs

Scroll through configured inputs.



Opening a file from SD card

Open a .DCF or .UCS file to send to the controller.

When saving a file , use **AutoName** to add product, serial-number, Algorithm and checksum automatically in front of the filename.

Note that opening a file, require a license.